



Changing people's lives

# 2024 Corporate Skin Checks

A Corporate Health Management service.

*Australia's leading health & wellbeing company offering an onsite or voucher Skin Check program to meet all of your organisational needs.*



# What is a Skin Check?

Australia has the highest incidence of skin cancer in the world. It is for this reason CHM offers skin checks, conducted by appropriately trained medical and dermal specialists to our corporate clients and their employees.

A 'skin check' can be defined as a comprehensive assessment and examination of an asymptomatic person for any evidence of skin cancer.

The importance of early detection and regular skin self-examination is generally well understood within the working population.

What is less well understood is where to go for a skin check, when to have a skin check and how to proceed if an area of concern is found.

CHM's provision of skin checks is a preventative screening tool, conveniently conducted during a person's working day, often at their work location, from which referrals and ongoing treatment recommendations (i.e. skin check frequency) can be provided.



# Partnership with MoleMap

**CHM is proud to partner with MoleMap. CHM is Australia's first Health and Wellbeing company to offer both an Onsite Skin Check service, as well as a Voucher Skin Check system which can be redeemed at any of MoleMap's 50+ clinics Australia-wide.** Look after your employees with access to Skin Checks Australia-wide. Utilising our skin cancer detection service, getting your employee's skin checked is now easier than ever before.



## **Fast, flexible & efficient**

Trained Melanographers come onsite to your premises, or we can provide vouchers for employees to visit one of the 50+ clinics across Australia.



## **Professional advice provided**

Professional advice will be provided to all employees. Recommendations and referrals to GP's and appropriate specialists will be provided where necessary.



## **We take care of everything**

We organise the appointments and admin for you, including coordinating skin screening across several work sites.

## **Australia's trusted skin cancer detection specialists.**

With over 50 clinics across Australia, MoleMap is Australia's leading skin cancer detection, diagnosis and skin-mapping service. Our team of Melanographers and Dermatologists have been detecting and diagnosing melanoma and other skin cancers since 2005.

Skin Checks provide the opportunity to spot signs of skin cancer early.

## **What happens on the day?**

At your appointment you'll be seen by a melanographer who'll take the time to thoroughly check your skin from head-to-toe. They'll help you feel at ease throughout the whole process.

Professional advice and recommendations will be provided. If further treatment is needed, you'll be referred to your GP or a skin specialist.



# What happens in a Skin Check?



Each examination will take approximately 20 minutes, from start to finish, including employees undressing and re-dressing.



Employees will be given privacy to undress, will be instructed to put on a disposable gown and to leave their underwear on.



Each skin check will be a thorough and comprehensive examination of the skin by a specialist who will advise of any abnormal skin lesions on the employee's skin.

Once the screening has been completed, our specialists will discuss any findings with the employee. If it is a minor matter, the specialist will advise the employee how to treat or manage that skin condition. If further treatment is required, the employee will be referred to their GP or appropriate specialist.

Each screening is designed to be educational, discussing preventative measures for ultimate skin protection. All results are completely confidential. No personal results will be shared with the organisation's management.



# Why get a Skin Check?

*Issues and challenges companies now face.*



## Organisational Risks



## CHM's Skin Check Solutions

Australia has one of the highest rates of skin cancer in the world. Skin cancer, including melanoma and non-melanoma skin cancer, is the most common cancer in Australia.

Skin checks are vital for early detection of skin cancer and are an essential inclusion in any workplace health and safety program.

Under Australian workplace health and safety legislation, employers must take steps to protect workers from harmful levels of exposure to UV radiation and reduce the risk of skin cancer.

Our service provides education on sun protection measures and raises awareness of the early signs of skin cancer.

Large organisations have multiple sites and must ensure all employees are offered regular skin check services.

Our skin check programs can be delivered to all metro & regional areas of the state. No matter the logistics, we'll ensure your programs run smoothly.

Reports and data have shown a significant drop-off in routine skin checking across Australia during COVID-19.

By opting to include our onsite skin cancer checks, your organisation can take care of the health of your employees and put their minds at ease.



are treated for skin cancer in Australia...  
that's around 750,000 per year!

*After my skin cancer scare, I now make sure my whole family is checked yearly.*

*Graeme - VPS*

## **Skin Checks**

*It's never too late, or too early to start preventing skin cancer*

*It is such a relief to know that I can get my skin health checked while at work.*

*Sam - VPS*

## **2 in 3**

Australians will be diagnosed with skin cancer by the age of 70.



(Melanoma is more common in men than women)

# Sun Smart Webinar

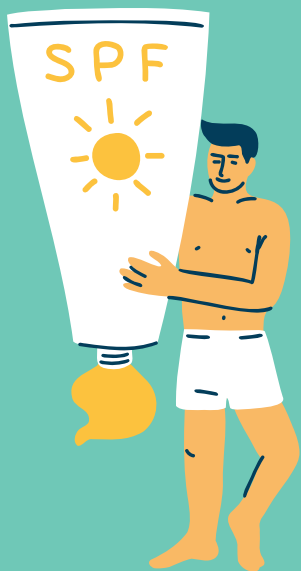
## Compliment your Skin Check program with CHM's informative webinar Sun Smart.

This 45 minute skin cancer awareness webinar, presented by a CHM doctor, takes you through skin cancer, being SunSmart, and how to incorporate sun protection strategies into your day to day activities.

### Specifically we'll address:

- Skin cancer in Australia
- Types of skin cancers
- Detecting skin cancer & self monitoring
- Sun protection and understanding sunscreen

Be sure to educate your employees thoroughly with this CHM's comprehensive Skin Check program.



## Being Sun Smart: Skin Cancer Awareness – with MoleMap

### Snapshot

Skin cancer is almost entirely preventable. Making sun protection a part of your life, avoiding sunburn and checking your skin regularly will help prevent further damage to your skin. Join our webinar with partners Molemap and educate yourself on how best to protect your skin against sun damage and promote safe measures against life taking skin damage.

### Duration

45 minutes  
(plus question time)

### Delivery Method

Microsoft Teams

### Leadtime

2 weeks



# Investment

Please contact us today for a free quote that best suits your business and your people. We're here for the health and wellbeing of your company.

Contact

**Zymri Alimi | Director, Commercial & Customer**

(03) 8584 1900 | [HealthServices@chm.com.au](mailto:HealthServices@chm.com.au)







# CHM

*Corporate Health Management is one of Australia's leading providers of corporate health services. We have worked with hundreds of organisations, and thousands of individuals, providing a diverse range of health and wellbeing services.*

(03) 8584 1900 | [HealthServices@chm.com.au](mailto:HealthServices@chm.com.au) | [www.chm.com.au](http://www.chm.com.au)

Updated: 26/02/2024